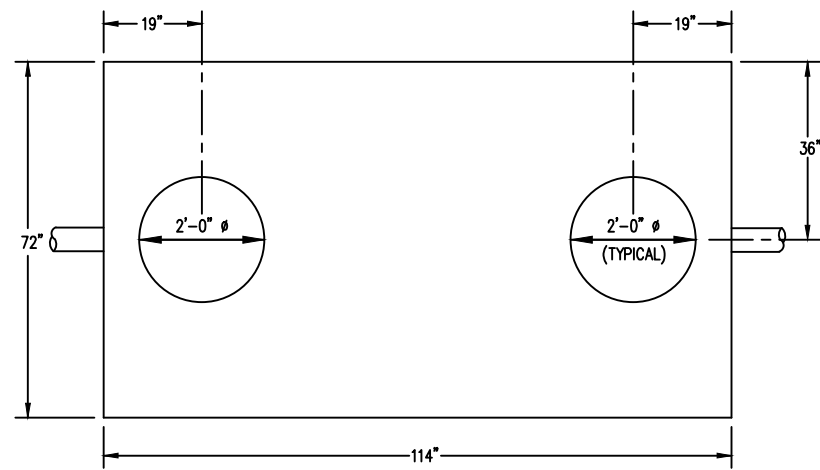


MANHOLE CASTING TABLE		
LOCATION	MODEL	COVER
18" INCHES OR MORE ABOVE 100 YEAR FLOOD ELEVATION OF ALL WATERWAYS	EAST JORDAN 1022Z1GS OR NEENAH R-1772	HEAVY DUTY SOLID
LESS THAN 18" ABOVE 100 YEAR FLOOD ELEVATION OF ALL WATERWAYS	EAST JORDAN 1022Z1PT	HEAVY DUTY SOLID
LID		
OWNERSHIP		LETTERING
PRIVATE		"GREASE"

- NOTE:
- INTERCEPTOR/SEPARATOR SHALL CONFORM TO ASTM C 478 UTILIZING 4,000 PSI CONCRETE
 - EXTERIOR INSTALLATION MUST BE CONCRETE OR CAST IRON. STEEL INTERCEPTORS/SEPARATORS SHALL ONLY BE INSTALLED INSIDE A BUILDING.

ALL CASTINGS TO BE SUPPLIED WITH FOUR (4) ANCHOR BOLT HOLES

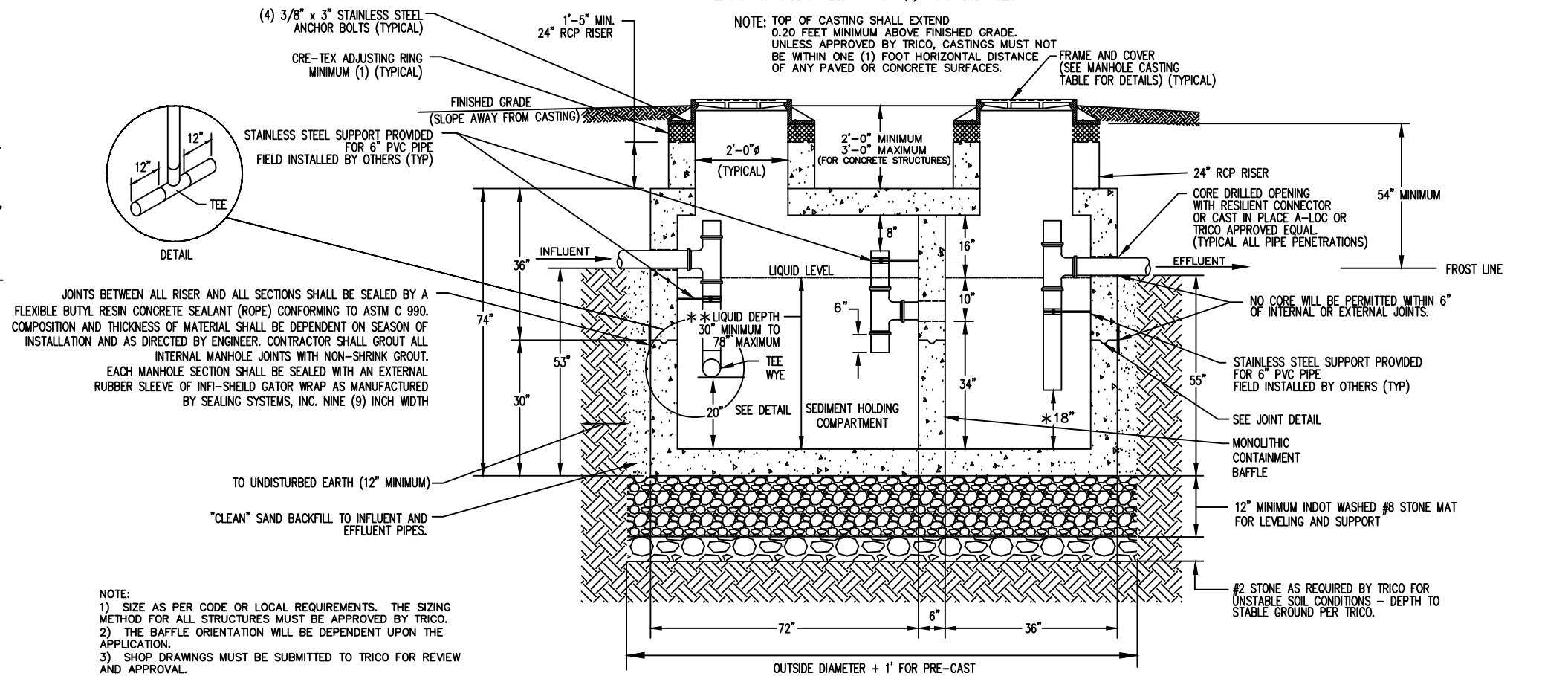
NOTE: TOP OF CASTING SHALL EXTEND 0.20 FEET MINIMUM ABOVE FINISHED GRADE. UNLESS APPROVED BY TRICO, CASTINGS MUST NOT BE WITHIN ONE (1) FOOT HORIZONTAL DISTANCE OF ANY PAVED OR CONCRETE SURFACES.



TOP VIEW

NOTE:
STRUCTURE TO BE SEALED IN THE FIELD WITH A SINGLE ROW OF CENTERED KENT SEAL™ No2 PREMIUM or FLEXIBLE BUTYL RESIN CONCRETE SEALANT (ROPE) CONFORMING TO ASTM 990

NOTE:
McCREARY CONCRETE PRODUCTS, INC
APPROXIMATE WEIGHTS:
BASE SECTION 9375 lbs
RISER SECTION 7650 lbs
TOP SLAB 5700 lbs
STRUCTURE WEIGHT TOTAL 22725 lbs



JOINTS BETWEEN ALL RISER AND ALL SECTIONS SHALL BE SEALED BY A FLEXIBLE BUTYL RESIN CONCRETE SEALANT (ROPE) CONFORMING TO ASTM C 990. COMPOSITION AND THICKNESS OF MATERIAL SHALL BE DEPENDENT ON SEASON OF INSTALLATION AND AS DIRECTED BY ENGINEER. CONTRACTOR SHALL GROUT ALL INTERNAL MANHOLE JOINTS WITH NON-SHRINK GROUT. EACH MANHOLE SECTION SHALL BE SEALED WITH AN EXTERNAL RUBBER SLEEVE OF INFI-SHEILD GATOR WRAP AS MANUFACTURED BY SEALING SYSTEMS, INC. NINE (9) INCH WIDTH

NOTE:

- SIZE AS PER CODE OR LOCAL REQUIREMENTS. THE SIZING METHOD FOR ALL STRUCTURES MUST BE APPROVED BY TRICO.
- THE BAFFLE ORIENTATION WILL BE DEPENDENT UPON THE APPLICATION.
- SHOP DRAWINGS MUST BE SUBMITTED TO TRICO FOR REVIEW AND APPROVAL.

* DISTANCE MAY BE INCREASED BASED ON THE CONSTITUENTS OF THE WASTE WATER FLOWS. CONSULT TRICO PRIOR TO SHOP DRAWING SUBMITTAL.

** MINIMUM LIQUID DEPTH MAY BE REDUCED ON A CASE-BY-CASE BASIS AS APPROVED BY TRICO.

KENT SEAL™ No2 PREMIUM GRADE BUTYL RUBBER SEALANT or FLEXIBLE BUTYL RESIN CONCRETE SEALANT (ROPE) CONFORMING TO ASTM C990

PRECAST CONCRETE ADJUSTING RING OR FLANGE OF CASTING

JOINT DETAIL

EXTERIOR INTERCEPTOR/SEPARATOR DETAIL

NO SCALE